

## Tauranga City - Natural Vegetation Delivery Plan

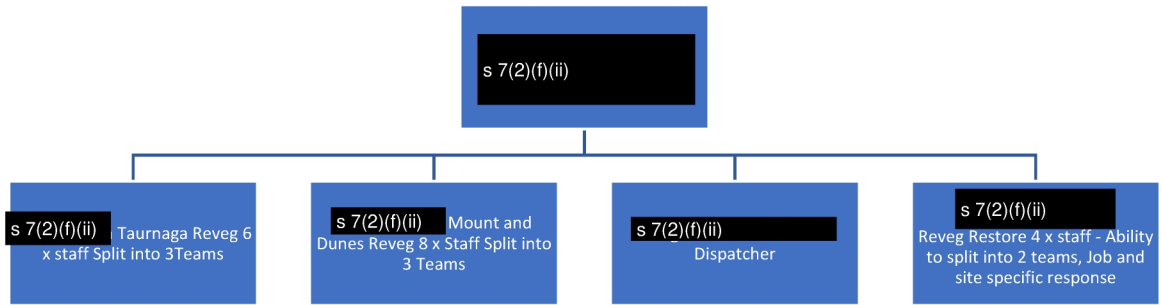


## Delivery Management Overview

### Summary of scope

- Revegetation Maintenance, Restoration and Reactive Weed Control
- 250 hectares of revegetation maintenance alone.
- There is also 243 hectares of Special Ecological area which requires development and maintenance, this area includes the dunes.
- Approximately 126 Hectare of Parks land which is not on any contract and bush covered including hard to access gully's where reactive weed control is undertaken as unscheduled activity.
- Roading assets, maintained through our Resto/Reactive team until a full scope is received. Working with the advisors currently providing additional support. Priorities to be adapted to manage these assets.
- Storm water assets, these will be done by the maintenance teams as part of their normal rounds. Some assets are already present in the Maintenance rounds others to be added. We will be working with the advisors to do these based on priorities P1 higher public amenity, P2 Bi annual visits for basic weed control to minimise CCM's .
- Restoration sites and plans not received yet.

- **Natural Vegetation Team Structure**



- **Key for the table below.**

- P1- Spring Flush, Post-holiday Period were increased recourse maybe required due to the weather, environment and or Staff Leave
- P2- Known periods were additional resource maybe required. Eg Large Events utilising our sites
- P3- Business as usual, no additional resource required.
- P4- Known low output time, increased round frequency leading up to this. Holiday periods.

Jan	Feb	Mar	Apr	May	June	July	Aug	Sept	Oct	Nov	Dec
Summer	Summer	Autumn	Autumn	Autumn	Winter	Winter	Winter	Spring	Spring	Spring	Summer
P1	P2	P3	P3	P3	P2	P4	P3	P1	P1	P1	P1

**Methodology**

- **The Tauranga and Mount teams** will predominantly be round based, except for council arranged planting days and other larger projects at the advisor’s request where we may need to seconder them to the Reveg Restore team to complete a large portion of Works.
- **Reveg Restore / Reactive**, will be our reactive team dealing with all customer/advisor raised CCM’s allowing the other teams to concentrate on there rounds.

**Spray chem and on site works summary**

	Chemicals allowed to be Used	Alternative means of Maintain site in inclement weather-	Sites excluded from Spraying
E1 to E4 Dv1 to Dv4	-Glyphosate, -Haloxypop -Metsulfuron-methyl -Organosilicon penetrant -Triclopyr -Clopyralid	-Hand pull -Line Trim -Cut and Paste (light rain) -chipping -Rubbish collection -Equipment maintenance -planting (if correct season)	-Please see spray free register <a href="https://www.tauranga.govt.nz/council/council-news-and-updates/agrichemical-applications/spray-free-register">https://www.tauranga.govt.nz/council/council-news-and-updates/agrichemical-applications/spray-free-register</a>  -Agri Chemical policy document <a href="https://www.tauranga.govt.nz/Portals/0/data/council/policies/files/use-toxic-agrichemicals-vegetation-management.pdf">https://www.tauranga.govt.nz/Portals/0/data/council/policies/files/use-toxic-agrichemicals-vegetation-management.pdf</a>  -Spray Free reserves

		<a href="https://www.tauranga.govt.nz/exploring/parks-and-reserves/agricchemicals">https://www.tauranga.govt.nz/exploring/parks-and-reserves/agricchemicals</a>
--	--	---

**Escalation work plan**

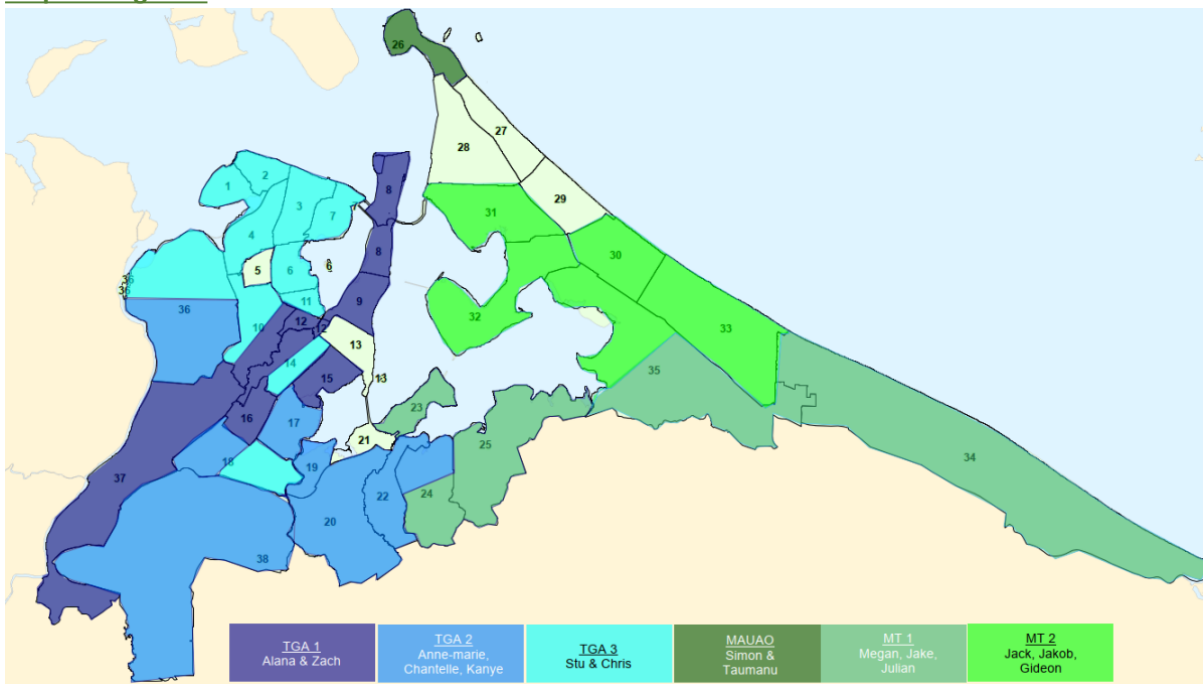
- Daylight savings, during this period we will look to increase hours and were possible roster teams on earlier to have the ability to Spray at a higher frequency while the weather is calmer in the early morning.
- 2x Additional Temp Recourses required during the spring flush, this is to enable us to shift skilled resource between the teams and not impact our rounds by pairing them up with teams doing established rounds.
- At the direction of the advisors, we will increase our frequencies at specific high trafficked sites, also sites that boarder large natural habitats that are prone to weed invasion.

**Christmas Period (Normal Council Shut down Period)**

22 Dec 2023 Half Day, returning to work on the 8<sup>th</sup> of January 2023

- Standard City Ops on call team is already in place for Afterhours and Stat days.
- 1 Crew coving Mauao, Mount to Tweed Dunes inspection, Omanu around the surf and Papamoa Domain Area
- Other Work to be provided will DV1 and E1 sights during this period.

**Dispatching Plan**



- Teams to be sent rounds based of the maintenance areas above, this is to be reviewed every three months due to additional areas being added. This insures we have our recourses and expertise in the right area’s and spread fairly.
- The Reveg restore team is currently acting as the reactive team across the city looking after Contract CCM’s, which include Roding and Storm water assets.
- Dispatch Spreadsheet

### Monitoring and auditing plans

- Team Leader to complete 4 SBC Audits per week 2Quality and 2 H&S
- Supervisor to complete 2 SBC Audits per week 2Quality and 2 H&S
- Forman to complete 1 SBC Audits per week 1 Quality and 1 H&S(To be revised)
- 
- What other monitoring info do we need to look at?
  - Rainfall quantities
  - Wind Flow and speed

### Meeting and Progress Reporting

- Fortnightly progress meetings (plan finish)
- Advisors & Supervisor Forepeople to alternate. Team leaders optional
  - Ops meeting monthly
- Supervisors Forepeople to alternate, Team leaders and Contract manager
  - City ops meeting Monthly

### Contract Specification.

#### 1.1.1.1

Revege Category	Competing Vegetation Control Areas	Maximum Competing Vegetation Height	Minimum Annual Inspection Frequency
E1	Within a 250mm radius of each native plant's stem/cluster, or the drip line, whichever is greater.	50mm	12
	All other areas within the site.	200mm	
E2	Between native plants. Low growing herbs and/or rank grasses are acceptable (not vines or creepers) so blanket spraying is not required.	500mm	6
	Within 2m of the outer edge of each site.	200mm	6

E3	Spot spray throughout. Within 2m of the outer edge of each site	1m	2 - 3
E4	Remove all regenerating emergent material, (specifically planted material to remain unless specified by the Principal). Canopies of long term tree species to be released from competing vegetation until successfully grown through the canopy.	500mm	2 -3

**1.1.1.2 Table 2: Revegetation weed control requirements**

<b>Category</b>	<b>Competing Vegetation Control Areas</b>	<b>Maximum Competing Vegetation Surrounding</b>	<b>Minimum Annual Inspection Frequency</b>
DV1	With a 50cm radius of each native plant stem/cluster, or drip line whichever is greater	.50m	24
	Exotic Grass is not acceptable		
	Spot Spray Throughout		
DV2	With 1m radius of each native plant stem/cluster, or drip line whichever is greater	1m	12
	No vines or creepers acceptable		
DV3	3 metre margin weed free from the native vegetation edges of all the beach accessways which pass through the coastal reserve (and other locations e.g. coastal carpark edges)	3m	12
DV4	Remove all regenerating emergent material, (specifically planted material to remain unless specified by the Principal)	1m	6

	Must not provide a weed seed or vegetative weed source for the surrounding Coastal reserve		
	Remain litter free especially following heavy rain		

**Future Continuous Improvement Opportunities**

- **Water Safety Course/Habour Master Qual/Man over board ( Allow us to self-Perform Maintenance on the Island in reserves)**
- **Drone in house capability. (Spraying, Seed dispersal through wet lands, 3d Profile and in the event of a Natural disaster we can do advanced recognisance.)**
- **Robot mower- to be shared with Mowing (Spider Mower for Roading assets on high Banks)**